



## *Developing Local & Global Leaders*



*Develop leaders who promote social justice in partnership with diverse local and global communities.*

*Sister Dorothy "Dot" Ettling, CCVI*

*1940-2014*

*Ettling Center for Civic Leadership*

*Founder*

## 2016 Executive Summary



In 2012, The University of the Incarnate Word (UIW) in partnership with CHRISTUS Health (CHRISTUS) and support from the Sisters of Charity of the Incarnate Word created the Ettling Center for Civic Leadership (ECCL). The **Mission** of the **Ettling Center for Civic Leadership** in the spirit of Christian service, is to: *Develop leaders who promote social justice in partnership with diverse local and global communities.*

The **Vision** Statement expands on the mission:

- *The **Ettling Center for Civic Leadership**, is a partnership between the University of the Incarnate Word and CHRISTUS Health, with an initiative guided by the principles of Catholic Social Teaching.*
- *It is dedicated to promoting the common good by educating enlightened and concerned leaders committed to learning, research, advocacy, and service for those in most need.*
- *It promotes civically-engaged leaders collaborating in partnership with local and global community stakeholders to achieve individual/social transformation while respecting the dignity of each individual and all creation.*



### Student Engagement

**Cardinal Community Leaders**-The Ettling Center coordinates the Cardinal Community Leaders (CCL) program, a model program that encourages students to develop civic leadership competencies and increase awareness of social justice issues from extended service experiences both locally and globally. The 2016-2017 academic year welcomes the 4th cohort of CCL's who will continue a legacy of service to the community averaging roughly 2,000 hours of community service impacting over 4,000 children, adults and senior citizens in the Greater San Antonio Area.

**Verano Con ARISE**- The Ettling Center has supported efforts in hosting a summer camp for children living in the South Tower Colonia in Pharr, Texas affiliated with the non-profit ARISE. The center has supported students and staff in this initiative for over three years and has committed to continue serving the needs of this underserved population through at least 2019. This initiative has impacted over 700 families and over 300 children and youth from ages 3 to 17.

**Sustainability Scholars**- The Ettling Center for Civic Leadership in association with UIW's Student Government Association in 2015 began the facilitation of the Sustainability Scholars Program. Scholars receive a semester scholarship to maintain, support, promote and bring awareness to UIW and the San Antonio community of the balance of human development and growth via various sustainable projects that ensure the welfare of the natural world, both in the present and for the future—community gardens & mariposa project. Local efforts of the Sustainability Scholars have impacted over 2,000 local families. The initiative has received approval by SGA to proceed through 2019.

### Community Partnerships

**Leukemia & Lymphoma: Light the Night**-The University of the Incarnate Word has participated in the Light the Night over the past two years benefiting The National Leukemia & Lymphoma Society. The institution's effort is led by the Ettling Center which has donated over \$10,000 and plans to continue to participate in this worthy cause.

**Cardinal Latina Mentor Program**-In collaboration with the San Antonio Hispanic Chamber, the Ettling Center for Civic Leadership developed a pilot mentoring program to improve retention and graduation rates of UIW students. The pilot program matches professional Latinas part of the Chamber's Latina Leadership Institute with Latina undergraduate students from UIW. The inaugural pilot program which began in 2015 was recognized as a *Bright Spot and Commitments to Action* by the White House Initiative on Educational Excellence for Hispanics. The commitment of the university is through 2018 to support the retention, persistence and graduation of 50 UIW undergraduate Latinas.

**Southwest ISD Initiative**-The Ettling Center has developed a strong collaboration with the administration of Southwest ISD which has resulted in SWISD students participating in a MSE summer science camp on the UIW campus, donation of computer technology as part of the institution's Cardinal Technology Recycling Program and the hosting of the district's annual College & Career Expo for over 900 middle school students during the fall semester. The College & Career Expo is set for 2017 and is a tentative commitment between the institutions through 2019.

**Global Service**

**Oaxaca, Mexico-Health Mission Trip** -The Ettling Center has collaborated with Los Quijotes Health Ambassadors of San Antonio over the past two years and plans to continue to support this unique and beneficial initiative through 2019. The Ettling center has been able to engage and involve the Rosenberg School of Optometry, Feik School of Pharmacy and the Ila Faye Miller School of Nursing & Health Professions to comprise a UIW Mission Team to support a Health Mission in Oaxaca, Mexico. The annual week-long health mission has served over 5,000 patients and conducted over 12,000 medical procedures collectively over the past two years in association with the government health services of Oaxaca and Nursing and Medical students of Oaxaca.

**Chimbote, Peru-Health Mission Trip** -The Ettling Center, in collaboration with the Rosenberg School of Optometry, the Nutrition Department, the Feik School of Pharmacy, the HEB School of Business and Women's Global Connection, has coordinated a health mission trip to Chimbote, Peru in support of the 50 years of service by the Sisters of Charity of the Incarnate Word. The Ettling Center supports a team to Peru every other year which services over 400 patients and conducts over 500 medical procedures. Commitment to continue to support this effort has begun for 2017.

**International Service Mission Scholarship** -The Ettling Center, with the financial support of the Student Legacy Fund has awarded over ten International Service Mission Scholarships to support international service. 2015 recipients conducted service in Peru, Mexico & India. Funds are maintained by the Ettling Center from the SGA Legacy Funds to ensure international service is conducted by students wanting to continue the mission of UIW abroad. Funds are available through 2019.

**Campus/Departmental Partnerships**

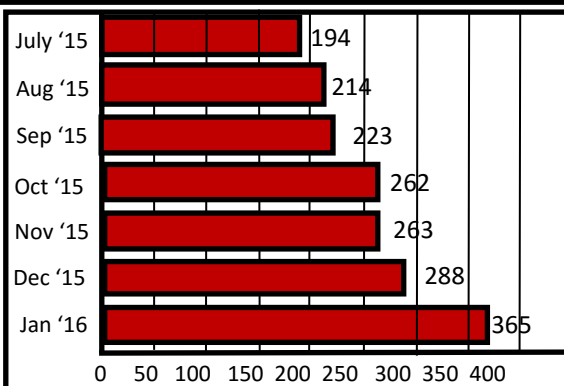
**Cardinal Camp**-Cardinal Camp is a two-day extended orientation program conducted by Student Life that welcomes UIW students to the campus community by educating them on the various programs, services, and traditions of the institution. Participants also have the opportunity to meet fellow students, have fun and learn about life at UIW. The Ettling Center coordinates the service project for the participants of the Cardinal Camp. Since 2013, the service project identified at Cardinal Camp has allowed over 350 new UIW students to conduct over 1,000 hours of community service.

**Civility Week**-The Ettling Center for Civic Leadership in collaboration with Student Counseling and Student Life have supported and implemented Civility Week events over the past two years. This week celebrates the institution's commitment in supporting persons of diverse backgrounds, the belief that mutual respect and interaction advances the discovery of truth, mutual understanding, self-realization, and the common good. This celebration of respect for others has engaged over 800 students over the past two years and plans have begun for the 2017 implementation.

**DiversiTEA** -The Ettling Center, with the assistance of Student Life and International Student Services has implemented a unique program based on the Sisters of Charity tradition of compline—afternoon snack and tea. This tradition of taking time to interact and enjoy each other's company has brought over 1,500 students together to learn more about each other, a different part of the world and have some tea and cookies. This program which has been in existence since Spring 2016 has created a sense of community and exchange of culture.

**Ettling Center for Civic Leadership Impact**

**ECCL OrgSync Monthly Users**



**ECCL Global Health Mission Trips**



Oaxaca, Mexico 2015 & 2016

Chimbote, Peru 2015

- Over 5,000 patients seen
- Over 12,000 medical procedures performed
- Over 400 patients seen
- Over 550 medical procedures performed

**ECCL Student Engagement Programming**

**45**

Programs

**1407**

Attendance

**Types of Programming:**

- Mentoring
- Cultural Events
- Heritage Awareness
- Veterans Tailgate
- Voter Registrations
- Tabling/Fairs

Data Source: events and attendance tracked from July-Dec 2015

**UIW Multi-Institutional Study of Leadership Survey Analysis**



Source: 2015 MSL National Survey

\*denotes above the survey avg.

- ◆ Random sampling of 1,335 UIW undergraduates
- ◆ 41.8% response rate\*/ 79.8% completion rate\*
- ◆ With respect to Community Service\*, UIW students scored above average regarding the need for collaboration and as it relates to civility;
- ◆ UIW female students\* scored above the national average with respect to Resiliency;

**2016-2017 Programs/Services**

Administration	Student Engagement	Community Partnerships	Global Service	Faculty Engagement
<ul style="list-style-type: none"> <li>• Carnegie Classification</li> <li>• CardinalsSync</li> <li>• Co-Curricular Transcript</li> <li>• Memorandums of Understanding</li> <li>• Collaborative Change Initiative</li> <li>• Strategic Planning</li> <li>• Budgets/Grants</li> <li>• Operations/Personnel</li> </ul>	<ul style="list-style-type: none"> <li>• Cardinal Community Leaders</li> <li>• Sustainability Scholars</li> <li>• Cardinal Camp</li> <li>• Move-In</li> <li>• Voter Registration</li> <li>• Assoc Provost Lunches</li> <li>• DiversiTEA</li> <li>• Alternative Break</li> <li>• Fall Tailgates</li> <li>• Light the Way</li> <li>• Light the Night</li> <li>• Meet the Mission</li> <li>• Golden Harvest</li> <li>• Civility Week</li> <li>• Peace &amp; Social Justice</li> <li>• Earth/Sustainability</li> <li>• Cultural Awareness                             <ul style="list-style-type: none"> <li>◆ Hispanic Heritage</li> <li>◆ Black History</li> <li>◆ Native American</li> <li>◆ Int'l Awareness</li> <li>◆ Women's Month</li> </ul> </li> <li>• WISH DC Internship</li> <li>• Silver &amp; Black Spurs Foundation Internship</li> </ul>	<ul style="list-style-type: none"> <li>• Back to School Health/Wellness Fair [Christus &amp; Catholic Charities]</li> <li>• Cardinal Latina Mentor Program</li> <li>• ARISE Summer Program</li> <li>• ARISE Health Mission Initiative</li> <li>• Office of Minority Health Resource Ctr                             <ul style="list-style-type: none"> <li>◆Cultural Competency</li> <li>◆Promotora Training</li> </ul> </li> <li>• Southwest ISD Initiative</li> <li>• Mariposa Monarch Project</li> <li>• The Mission Continues Internship/Fellows</li> </ul>	<ul style="list-style-type: none"> <li>• Los Quijotes-Oaxaca Health Mission Trip</li> <li>• Chimbote, Peru</li> <li>• UIW Mexico Exchange                             <ul style="list-style-type: none"> <li>◆Irapuato</li> <li>◆Mexico City</li> </ul> </li> <li>• International/Global Education</li> </ul>	<ul style="list-style-type: none"> <li>• Service Learning Faculty Meetings</li> <li>• ASL Designation</li> <li>• ASL UIW Guidelines</li> <li>• UIW Reflection</li> </ul>

## **Administration Services**

**Carnegie Classification for Civic Engagement-** The University of the Incarnate Word's Ettling Center for Civic Leadership will submit a formal application to the Carnegie Foundation for the Advancement of Teaching in 2020. The Carnegie Foundation's Classification for Community Engagement is an elective classification, meaning that it is based on voluntary participation by institutions. The elective classification involves data collection and documentation of important aspects of institutional mission, identity and commitments, and requires substantial effort invested by participating institutions demonstrating their commitment to service and their respective community.

**CardinalsSync Community Service Tracking System-** UIW is the only institution of higher learning in San Antonio that can effectively document how student civic engagement benefits the wider community. This past year, the Ettling Center has continued with the transition of the OrgSync software system (now called CardinalsSync) from "paper to online" to assist with the tracking and maintaining community service for undergraduate students. The system has gone through various progressions since the planned transition in July of 2015. As a result, over **12,044** student involvement entries have been submitted totaling **151,521** hours of community service. According to *Independent Sector*, an impartial entity which focuses on volunteer hours, community service and non-profit activities, the total number of community service hours conducted by UIW students from (June 2015 through November 2016) totals **\$3,583,471.65** (Source: [http://www.independentsector.org/volunteer\\_time](http://www.independentsector.org/volunteer_time)).

**UIW Co-Curricular Transcript-** The Ettling Center continues its work on the development and implementation of a "pilot phase" ***Co-Curricular Transcript*** (CCT) with the Feik School of Pharmacy. Initial meetings and discussions have progressed the process to a draft form needing some finalizing on specific themes/titles to ensure accreditation requirements and guidelines are met on the UIW CCT. Initial pilot phase will begin in Spring of 2017 at the Feik School with with goal of expanding to other departments during the 2017-2018 academic year. Serving as an online feature in OrgSync/CardinalsSync, the Co-Curricular transcript records student involvement in various areas such as extra-curricular activities, honors/recognitions, study abroad, community service and memberships. Students are able to record and register in the OrgSync/CardinalsSync software system and join organizations, every student organization membership is recorded on the co-curricular transcript. Students can also self-record service involvement and completion upon verification by event coordinator or the Ettling Center for Civic Leadership. In essence, the transcript serves as a means to accentuate the extracurricular/activity journey of a student and provides a holistic view of their skills and abilities.

**Memorandums of Understanding-** In an effort to clarify and strengthen partnerships with governmental, educational, faith-based and non-profit organizations, the Ettling Center has developed formal Memorandums of Understanding which will outline roles and responsibilities between the partnering entities to increase community engagement and involvement while facilitating the needs of the San Antonio community. As of November of 2016, the Ettling Center has 22 signed MOU's with partnering organizations. The Ettling Center plans to have at least a total of (40) signed MOU's completed by the end of the 2017-2018 academic year.

## **Administration Services**

**Collaborative Change Initiative-** The CCL initiative led by Dean Goulet, Associate Provost, Aranda-Naranjo and Asst. Dean Dharamsi (leadership team) and core team members to include ECCL senior staff have conducted three appreciative inquiry meetings with UIW stakeholders ( faculty, staff, Deans, Provost and community members) to get input on the initiative in January and February, 2016. The focus of the project is to provide all UIW students opportunities to learn from, with and about each other, and to work in solidarity with the community for the common good. The collaborative change vision to engage all students in intra-professional/interdisciplinary community engagement to foster social accountability.

**Strategic Planning-** Ettling Center Senior Staff develop, plan, implement and analyze an annual and five year Strategic Plan to ensure the Center successfully meets all institutional and divisional goals and objectives as part of the institution's strategic planning. Members of the senior staff conduct meetings with all staff and ensure input is given by all stakeholders regarding all services, programs, operations, personnel and budgets are effectively and efficiently utilized.

**Budgets/Grants-** The Ettling Center submits an annual budget plan to the Office of Grants and to the Associate Provost for Civic Engagement to project and request resources to clearly align to the Center's mission, vision, goals and objectives.

**Operations/Personnel-** Ettling Center Senior Staff conduct annual and bi-annual performance evaluations for all full-time and part-time staff. Senior staff also review, analyze and submit any positions reclassifications as necessary to meet any new human resource guidelines and regulations.



## ***Student Engagement***

**Cardinal Community Leaders-** ECCL coordinates the Cardinal Community Leaders (CCL) program, a model program that encourages students to develop civic leadership competencies and increase awareness of social justice issues from extended service experiences both locally and globally. As a collective group, the Cardinal Community Leaders in the 2015-2016 academic year conducted over 600 hours of community service impacting over 1,500 children, adults and senior citizens.

**Sustainability-Student Sustainability Scholars-**UIW's Student Government Association Legacy Fund is financially supporting UIW students supervised by the Ettling Center to enhance the university's sustainability efforts. The Sustainability Scholars supports, assists and ensures the maintenance of five on-campus garden plots on the UIW Main Campus and three off-campus garden plots located at the Ella Austin Community Center, Guadalupe Community Center, and Carroll Early Child Education Center. Sustainability scholars collectively have spent more than 525 gardening hours at the on-campus, off-campus, and the UIW green house plant and production center for the 2015-2016 academic year and have done over 200 hours of sustainable work as of November for the 2016-2017 academic year.

**Cardinal Camp-** The Ettling Center for Civic Leadership assisted Student Engagement's three Cardinal Camps held on June 18-19, July 9-10 & August 13-14. The purpose of Cardinal Camp is to educate new students on the history, traditions, culture and support programs available at UIW for all students entering the new academic year. As part of this new student indoctrination, a service component is embedded in the program to ensure students obtain a clear understanding of the institution's mission on serving others. This year's, Fall 2016 Cardinal Camp participants totaling roughly 175 assisted with efforts at the Headwaters Sanctuary, providing over 500 hours of service.

**UIW Move In-**The university hosts a program called "UIW Move-In" each fall in preparation of the arrival of new and returning students to the university campus. This event encourages student volunteers to support and assist parents and students in unloading and gathering items to "move in" to their residence halls. The Ettling Center in collaboration with Residence Life and Student Engagement was able to assist with the volunteer services of over 172 students on Thursday, August 18 and roughly 57 for Friday, August 19, totaling over 340 hours of service.

**Voter Registration Initiative-** The Ettling Center in with UIW student organizations, Student Engagement, Residence Life, and Dimension of Wellness established a strategic plan to increase student awareness, involvement and participation in the 2016 Fall Election Cycle. Various programming events and services were conducted which assisted in surpassing initial projections of UIW community participation.

**Associate Provost Lunches-** The Associate Provost for Civic Leaderships attempts to meet with undergraduate and graduate students at least once in a month in an open-forum discussion in an effort to listen, learn and obtain student centered ideas to ensure the needs of the students are met while also noting various programs, services and opportunities offered at the university. As a result of such informal discussions, the Associate Provost has been able to link students to faculty, expand a mentoring program to include more students, and listen to student concerns regarding the growing cost of textbooks and their need for classroom preparation.



## Student Engagement



**DiversiTEA**—The Ettling Center for Civic Leadership in collaboration with the Office of Student Engagement assisted with the development of a renewed tradition of "Tea Time/Collation" at UIW. The daily tradition of "Collation" of the Sisters of Charity of the Incarnate Word, dates as far back as 1867 even before the establishment of the Incarnate Word College in 1886. The Sisters would gather for a break each afternoon when they returned to the convent from teaching in the local schools and helping in the hospitals. The Sisters would reflect and spend time with each other over tea and bread or cookies. Over 160 students, faculty and community members participated

in the initial event held on August 31, 2016 for the 2016-2017 academic year.

**Fall Football Tailgate**— The Ettling Center in collaboration with Alumni and Parent Relations has hosted a tailgate event each of the past two years in an effort to allow current students to interact with Alumni. Moreover, in an effort to expand this social and informal program to our community based organizations, the 2016 tailgate included members of Eva's Heroes (Eva's Heroes is a non-profit organization that supports and assists families and their loved ones who have special needs). During the October 29th tailgate, snacks, food, football, pie throwing and great conversation was enjoyed by the over 55 students and families that came out to enjoy the event.

**Light the Way**— Each Fall The University of the Incarnate Word opens the campus to the San Antonio community to celebrate the Holiday Season. Guests to the campus enjoy musical performances and await the annual lighting of the campus. In an effort to follow the institution's mission of service, guests and visitors are asked to donate toys for the Elf Louise Toy Drive. The Ettling Center has played a key role over the past two years in providing volunteers for the entire day to support the event. In 2015, over 200 students volunteered to assist with this campus-wide event and provided over 800 hours of community service.

**Leukemia & Lymphoma Society-Light the Night**—The University of the Incarnate Word participated in the 2016 Walk the Night event benefiting The Leukemia & Lymphoma Society (LLS) on October 1<sup>st</sup>. This is the institution's third year participating in this philanthropic program. Under the guidance of the Ettling Center for Civic Leadership, the university raised over \$3,300, for 2016, which places the institution's overall contribution to over \$10,000.

**Meet the Mission**—This is the Centers second year being involved with the tracking and solicitation of volunteers for the annual one-day community service project of "Meet the Mission", supported by the Office of Mission and Ministry. With the assistance of the CardinalsSync Software System, the Ettling Center was able to ascertain valuable data from the various service projects and documented over 750 hours of community service conducted by over 150 students participating on September 16, 2016.



## **Student Engagement**

**Golden Harvest**-The University of the Incarnate Word was founded by three French sisters of the Charity of the Incarnate Word. Their focus and mission was to care for those less fortunate, in need of assistance and provide charity. It is with this framework that UIW's Student Government Association created and established Golden Harvest. Since 2012, UIW has conducted this annual fall campaign to gather canned goods to help the Greater San Antonio area. As a result of this campus community effort, the university has collected over six tons of canned food to help those in need. This year, the Ettling Center has become actively involved in this annual charitable event by soliciting volunteers, bringing awareness of this effort to the campus community and supporting a closing 5K event to celebrate the work of the campus community.

**UIW Civility Week**-The Ettling Center for Civic Leadership in collaboration with Student Life have hosted and promoted programmatic events for Civility Week over the past two years. Programs and events are conducted to celebrate the institution's commitment in supporting a community of persons of diverse backgrounds, in the belief that mutual respect and interaction advances the discovery of truth, mutual understanding, self-realization, and the common good. Students and members of the campus community have enjoyed programs such as a Civility Walk and noting their reasons to be "civil" by writing on Discussion Boards for the campus community to read. Additionally, faculty conduct sessions on civility themes. In 2016, a sessions was conducted to discuss the Myths of Islam/Muslim Faith.

**Peace and Social Justice at the University of the Incarnate Word**-Concepts of peace and social justice are central in the Bible and a central value of UIW and the Ettling Center for Civic Leadership. From their very first days, the founders of the university, the Sisters of Charity of the Incarnate Word, have promoted the human dignity of all people. The ideas and concepts of peace as the fruit of justice that began as a "Peace Fair " in 1986, have expanded into many educational, prayerful, and celebrative events throughout the whole month of October with special emphasis on the last Wednesday of October near the anniversary of Dr. O'Halloran's death, a significant friend and partner of the CCVI's. This year the center supported and assisted with eighteen programs conducted on and off the university campus reaching over 300 participants.

**Earth/Sustainability Week**-The purpose of UIW's Earth/Sustainability Week is to maintain, support, promote and bring awareness to UIW and the San Antonio community of the balance of human development and growth with the welfare of the natural world, both in the present and for the future. In alignment with the tenet of Catholic Social Teaching and the emphasis of social justice supported by the Sisters of Charity of the Incarnate Word, programs, activities and discussions on the ecological footprint left by the campus community will ensure that the university continues to meet the ecological needs in ways that protect and restore the natural environment. The Ettling Center assists with promoting awareness, conducting a program or activity and gathering volunteers to support the efforts of Earth/Sustainability Week.



## ***Student Engagement***

**Cultural Awareness**-The University of the Incarnate Word aims to educate men and women who will become concerned and enlightened citizens within the global community. Thus, the Office of Student Life, Residence Life, and Ettling Center for Civic Leadership conduct various programs, activities, discussions and services to promote Hispanic Heritage Month, Black History Month, Native American Week, International Awareness Week, and Women's Month.

**Washington in Student Housing (WISH) Internships**-The University of the Incarnate Word in Washington Program (working with WISH--Washington in Student Housing Internships), assists and supports undergraduate students in applying and participating in a 32 hours a week semester-long internship opportunity with includes a weekly seminar with experts and policy practitioners. Maria Bedolla and Campbell Wallace were selected to participate in the most recent cycle of this internship program. The two UIW undergraduate students served to support the U.S. Marshall Service and the Global Peace Youth Program respectively.

**Silver & Black Foundation-Team Up Challenge Internship Program**-The Silver & Black Foundation Team Up Challenge is for students K – 12 and nonprofits. Kids from the Greater San Antonio area find a need in the community and figure out a way to help. Over the course of the program San Antonio Spurs players, coaches, mascots and volunteers lend a hand to help the students and school accomplish their goals. Over the past two years, the Ettling Center has

assisted a UIW student to be selected as a Volunteer Intern to support the project of the Team Up Challenge School. The university interns gain a scholarship of up to \$1,000 plus gain valuable skills applicable to future employment opportunities.



## Community Partnerships

**Back to School: Health & Wellness Fair-** In association with Catholic Charities and CHRISTUS Health, the Ettling Center for Civic Leadership assisted with the facilitation of a basic health and wellness check for children residing near the Guadalupe Community Center located on the city's Westside prior to the 2016-2017 academic year. UIW undergraduate and professional students from the school of nursing, optometry and pharmacy worked alongside CHRISTUS health professionals to conduct these wellness checks on Saturday, July 30, 2016. The goal was to serve at least 200-300 participants of the fair, although over 1,000 residents including 600 children attended the five hour event.



**Cardinal Latina Mentoring Program (CLMP)-** The Latina Leadership Institute (LLI) formed by the San Antonio Hispanic Chamber of Commerce (SAHCC) and the Ettling Center for Civic Leadership (ECCL) in the Fall of 2015 developed a mentoring program between Latina leaders within the community and UIW undergraduates. The purpose of the Cardinal Latina Mentoring Program (CLMP) is to enhance the persistence, retention and graduation rates of Latina UIW undergraduate students in partnership with a committed and dedicated Latina professional. In the inaugural cohort, 10 mentors and 10

volunteered to engage regularly and attend training sessions coordinated between partnering groups. In October 2014, the White House Initiative on Educational Excellence for Hispanics launched a Year of Action, and with it a national call for Commitments to Action in honor of its 25<sup>th</sup> anniversary. UIW was proud to be selected and recognized as model program with nearly 150 public and private sector organizations.

**Un Verano Con ARISE-** ARISE is a community based program that works with *colonia* families to strengthen their communities. Located in four *colonias* in South Texas, each ARISE center responds to the specific needs of the community. ARISE'S mission is to aid communities by helping residents identify life goals and providing resources to help them reach those goals on their own. ARISE is co-sponsored by the Sisters of Mercy of South Central and the Sisters of Charity of the Incarnate Word. Over the past three years, in collaboration with the Ettling Center for Civic Leadership over 50 UIW students have conducted a week-long summer camp for children ranging from 3-18 providing over 2,500 hours of service impacting over 500 children in the Lower Rio Grande Valley.

**Mission Continues Fellows/Internship-**The Mission Continues empowers veterans who are transitioning to life at home to find purpose through community impact. The Mission Continues deploys veterans to volunteer alongside non-profit partners to solve some of the most challenging issues facing local communities. Through this unique model, veterans build new skills and networks that help them successfully reintegrate to life after the military. UIW's Ettling Center for Civic Leadership was selected as a host site for two Mission Continues Interns serving at least 20 hours per week from October through April of the 2016-2017.

## **Community Partnerships**

**ARISE Health Mission Initiative-** The University of the Incarnate Word's School of Optometry in coordination with the Ettling Center for Civic Leadership is planning a Health Mission Trip to address the vision and health needs of residents of the four *colonias* in South Texas supported by ARISE Inc. for the Winter of 2016. The UIW Team is also working with the non-profit organization Remote Area Medical to support the anticipated 250-500 residents who will be served during this mission trip. In alignment with the institution's framework of Catholic Social Teaching and the founding sisters' devotion to serve those less fortunate and provide health care for this in need, this initiative is supporting the health care needs of ARISE families who reside in Hidalgo County where a large number of families live in *colonias*. These unincorporated rural subdivisions experience high levels of poverty, health challenges, lack of transportation, and adequate educational opportunities.

**Office of Minority Health Resource Center Community Health Initiative-**The Ettling Center collaborated with the US Department of Health & Human Services Office of Minority Health Resource Center to conduct two trainings (Cultural Competency for Health Professional Schools and Increasing Health Care Awareness in South Texas: Promotoras) to support and enhance community health initiatives and cultural competency in an effort to enhance South Texas. The Center received over \$6,000 in grant funding to conduct and support these events.

**Southwest ISD Collaborative Initiative-**In an effort to support, assist and enhance the institution's persistence, retention and graduation rates for "first-time in college" entering students to The University of the Incarnate Word, the Ettling Center for Civic Leadership has established a collaborative initiative with Southwest Independent School District. This partnership between the two educational entities is focused on improving service learning opportunities, leadership skills, academic preparation and professional development for both organizations.

- UIW hosted 900 eighth grade SWISD students during the 2016 Fall break as part of SWISD's annual **College & Career Exploration Day**.
- Eighteen SWISD middle school students participated in **UIW's Math, Science & Engineering Mini-GEMS & Mini-SEMI's 2016 summer camps**. During the math and science summer camp, students were able to design an underwater robot, conduct scientific lab experiments and worked with Autonomous Vehicle Systems (AVS).
- UIW's Dimension of Wellness students in the Fall of 2016 will be conducting health/wellness presentations for elementary level students on the importance of "**Washing Hands**" on three SWISD elementary campuses.
- UIW has established the "**Cardinal Computer Recycling Program**". This program recycles old computers and technology that is being transitioned from various institutional departments and offices. Much of this equipment is four to five years old. Thus, UIW will be partnering with various community based and educational entities to recycle this equipment which may be used to meet the needs of our partnering agencies while offsetting budgets which may be used to support the support and academic needs of San Antonio area students. SWISD will be one of the first community entities who will receive some of the donated technology.



**Mariposa Project: Guadalupe to Guadalupe-**The University of the Incarnate Word's Ettling Center for Civic Leadership in collaboration with ENLACE-Chicago and DePaul University's Steans Center are working on the development of a Mariposa (Monarch Butterfly) Project which will enhance and improve the migratory route of the Monarch butterfly from the Guadalupe Community Garden in San Antonio to the Guadalupe Community Garden in Chicago.

### **Global Service**

**Los Quijotes Health Mission Trip-Oaxaca, Mexico**-UIW's Ettling Center for Civic Leadership plays lead coordinator for the UIW campus community as part of a collaborative partnership with Los Quijotes of San Antonio Health Ambassadors. This annual health mission to the southern part of Mexico focuses on serving the indigenous population of the State of Oaxaca. Over the past two years, the Ettling Center has coordinated over forty members of the campus community comprising of faculty, staff and students from optometry, pharmacy, physical therapy, engineering, business and nursing. Over 5,500 patients have been seen since the university's participation in this initiatives providing over 9,000 medical procedures collectively with the government health services of Oaxaca and Nursing and Medical students of Oaxaca.

**Health Mission Trip-Chimbote, Peru**-UIW's Ettling Center for Civic Leadership plays lead coordinator for the UIW campus community as part of a collaborative Health Mission Trip to Peru in association with the Rosenberg School of Optometry. Working with the Sisters of the Incarnate Word and their missionary work in Peru, UIW faculty, staff and students are able to assist the visionary needs of over 300 local residents over a three-day health mission.



**UIW Mexico Student Exchange**-In an effort to expand the experiential learning of undergraduate students at UIW, specifically the Cardinal Community Leaders, the Ettling Center for Civic Leadership plans an exchange program with students from either the UIW Mexico City or UIW Irapuato campuses each academic year. Students gain insight into the educational opportunities of the sister campus while participating in local community service opportunities.

**International/Global Education**-The Ettling Center in collaboration with Women's Global Connection hosts informational and educational awareness discussions of international mission & service trips conducted in India, Africa, South/Central America, Asia and Europe. These informal forums allow students to discuss their experiences, reflections and observations of culture, customs, religions, education and economic systems of the regions visited.

**Faculty Engagement**

**UIW Service Learning Committee-** Sr. Kirk Martha Ann Kirk is serving as the faculty liaison for the Ettling Center and is coordinating efforts to increase the number of service learning courses offered at UIW. Service learning courses incorporate community service opportunities and guided reflection into the course content during the semester. Nineteen faculty members from departments across the university are serving on this committee that will provide recommendations to the Provost about establishing an official designation of service learning courses in the curriculum. Service hours earned during a service learning course count towards the student's 45 hour service requirement for graduation.

**UIW Service Learning Designation-**Service Learning (SL) Courses done in connection with course at UIW include the following elements: a) class-required service b) done to better understand course content, c) out of concern for the well-being of the community, and d) learning how to keep engaged for the future. (SL hours may also be used to satisfy the undergraduate 45-hr graduation requirement.) The UIW SL committee will be working with the Office of the Registrar to ensure the approved designation is noted on courses as part of the university catalog.

**UIW Service Learning Guidelines-**The UIW SL Committee will work with the Ettling Center for Civic Leadership to ensure all approved academic service learning courses adhere to "service learning guidelines". Hours may be completed through service activities with agencies or service-learning courses. Service Activities done in connection with a faculty-led course at UIW will include the following elements: a) helping meet community needs b) done out of concern for the well-being of the community and c) learning about civic responsibility. The primary motivation with service is to improve the quality of life for others and always respect their human dignity. Catholic Social Teaching calls UIW to serve those in most need in the wider community; but needs are everywhere: neighborhood, UIW, wider community including the global. Needs may include: health care, child care, literacy training, education, welfare, social services, transportation, housing and neighborhood improvement, public safety, crime prevention and control, recreation, rural development, community improvement, animal care, and care for the environment.

**UIW Reflection-**The UIW SL Committee and the Ettling Center for Civic Leadership will work with faculty and students to ensure reflection is part of the service being conducted with our partners on and off campus. Reflection must ask the following questions: 1) **What?** did I see/hear/do about the facts?, 2) **So What?** my reaction—thoughts/feelings?, 3) **Now What?** thinking about—the future.

**FAITH****INNOVATION****SERVICE****TRUTH****EDUCATION**

## 2016 Ettling Center Goals

- ◆ Increase Student Participation in ECCL Fall 2016 Sponsored Programs by 15%; research reveals student participation in university sponsored events/programs are more likely to persist and graduate;
- ◆ Increase UIW Student Community Service Participation by 10% for Fall 2016 (comparison Fall 2015 to Fall 2016); research reveals student participation in university sponsored events/programs are more likely to persist and graduate;
- ◆ Demonstrate a 10% collective increase in all internship opportunities sponsored by the Ettling Center for Civic Leadership, including but not limited to: 1) UIW Sustainability Scholars, 2) ECCL Internship Program, and 3) Community Work Study Internship Program.
- ◆ Increase by 25 % the number of Memorandums of Understanding (MOU's) with Community Based Organizations (CBO's) by the end of Fall 2016 (12/31/16) which will increase student persistence, retention and participation in internship opportunities;
- ◆ Increase by 10% the number of student participants of ECCL's Global Health Mission Trips and the impact they can and will have internationally to promote UIW's national & international brand;
- ◆ Increase by 10% the number of academic service learning courses offered by UIW faculty for the 2016-2017 academic compared to the previous academic year;
- ◆ Increase by 10% the number of community service opportunities that are interprofessional/interdisciplinary to foster social accountability across the learning continuum for all undergraduate, graduate and professional school students;
- ◆ Assist with the establishment of a program/service by the end of the Fall 2016 academic semester to assist with the financial literacy of UIW's undergraduate and graduate students in an effort to continue to maintain the institution's current graduate default rate.
- ◆ Increase marketing and media by 15% of ECCL Events/Programs (comparison FL '15 to SP '16) in an effort to increase UIW's national & international brand;
- ◆ Ensure successful implementation of OrgSync Software system and ECCL reframed Website to assist with data collection and analysis necessary for achieving Carnegie Classification for Community Engagement by August 2016.



**Memorandums of Understanding-Finalized**

#	Name of Organization	MOU Date
1	Headwaters at Incarnate Word	9/28/15
2	Witte Museum	9/30/15
3	Touchstone Communities	10/22/15
4	Portfolio Resident Services	1/6/16
5	SATX Inner City Development (ICD)	1/19/16
6	Young Women's Leadership Academy (YWLA), SAISD	1/25/16
7	Women's Global Connection (WGC)	2/29/16
8	The Mission Continues	3/7/16
9	Ella Austin Community Center (Ella Austin)	3/23/16
10	Fit for the Fight	3/23/16
11	The Village at Incarnate Word	4/18/16
12	Visitation House Ministries AND La Casita del Saber	5/10/16
13	Catholic Charities Archdioceses of San Antonio, Inc.	5/11/16
14	Martinez Street Women's Center (MSWC)	6/22/16
15	Each One Teach One	7/8/16
16	SA Youth	7/27/16
17	San Antonio Youth Literacy (SAYL)	7/29/16
18	Society of St. Vincent de Paul	8/25/16
19	The Brackenridge Park Conservancy	9/28/16
20	San Antonio River Foundation	10/14/16
21	Half Helen	11/2/16
22	Sutton Oaks-Franklin Management	11/2/16

**Memorandums of Understanding-In Process**

1	Eva's Heroes
2	Southwest ISD
3	Young Men's Leadership Academy
4	St. Anthony's Elementary
5	Incarnate Word High School
6	St. Anthony's High School
7	Healy Murphy Center
8	San Antonio Food Bank
9	Wheatley Community School
10	Dialog Institute

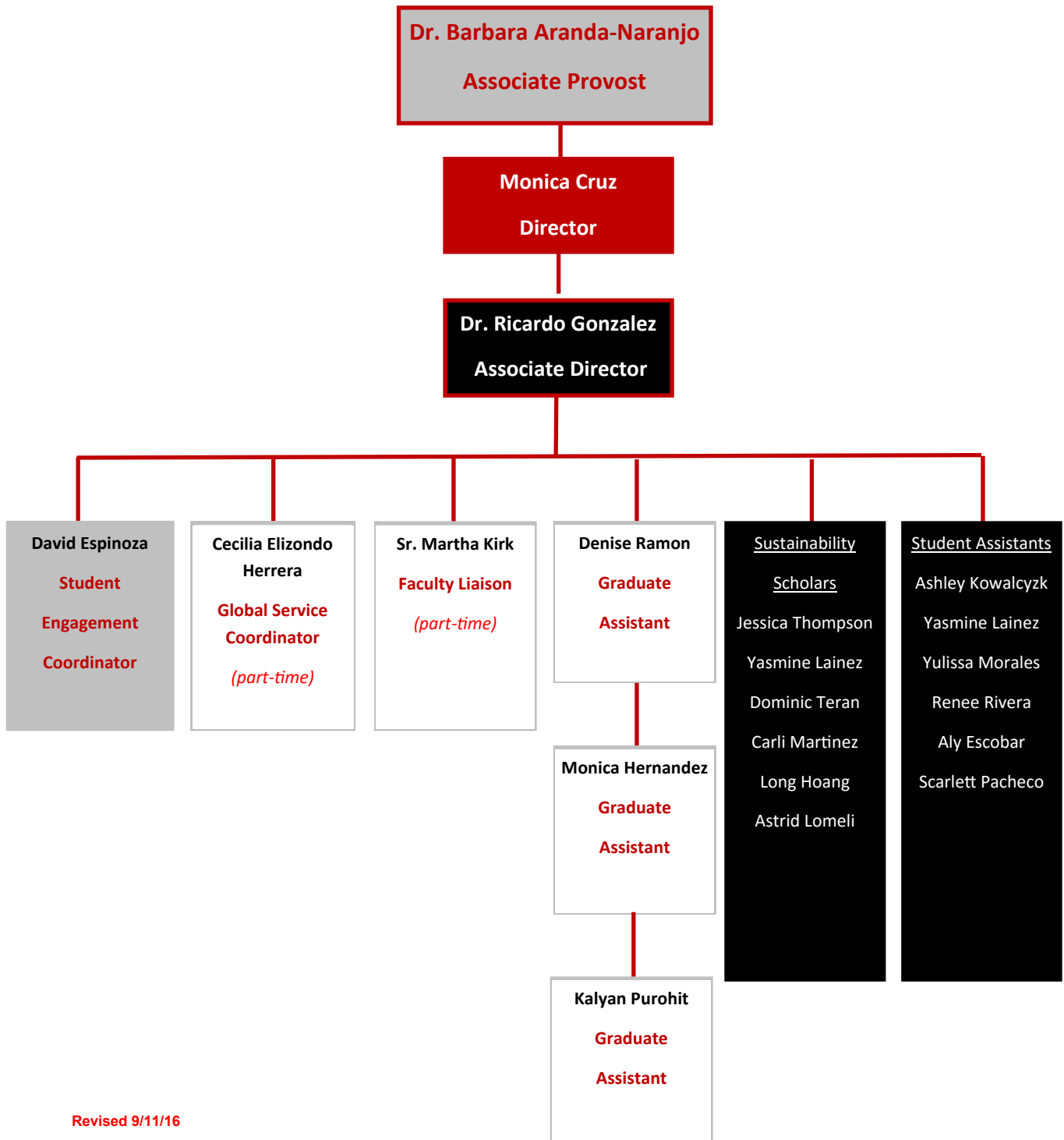
**Memorandums of Understanding-Prospects**

1	East Central ISD
2	Southside ISD
3	Diaper Bank of Texas
4	Harlandale ISD
5	Edgewood ISD
6	YMCA-Eastside
7	City of San Antonio-Diversity & Inclusion
8	San Antonio Botanical Garden
9	Cisneros Foundation
10	San Antonio Zoo



***Ettling Center for Civic Leadership Advisory Board***

Aranda-Naranjo, Barbara	UIW, Associate Provost for Civic Engagement
Ayala, Paul	UIW, Director of University Events & Student Programs
Vacant ECCL Advisory Board Chair	
Conklin, George	Senior Vice President and CIO, CHRISTUS Health
Cruz, Monica	UIW, Director of Ettling Center for Civic Leadership
Cuellar, Olympia	UIW, Undergraduate Student Representative
Felix-Ortiz, Maria	UIW, Humanities, Arts & Social Sciences, Associate Professor
Fernandez, Antonio	Catholic Charities, CEO
Fox, Louis	UIW, Community Relations, Assistant to the President
Fragoso, Marcos	UIW, International Programs, Vice President
Gillespie, Jon	UIW, Associate Director of Foundations-Corp & Government Relations
Gonzales, Dennis	CHRISTUS, Santa Rosa, Regional Vice President, Mission Integration
Gonzalez, Christine	CHRISTUS, Santa Rosa, Director of Volunteer Services
Herring, Tava	Wheatley Community School
Light, Kathleen	UIW, Office of the Provost, Provost
Maher, Sr. Walter	UIW, University Mission & Ministry, Vice President
Mercer, Wanita	UIW, Graduate Student Representative
Messbarger-Equia, Anne	Messbarger-Equia Consulting
Nath, Lopita	UIW, Humanities, Arts & Social Sciences, Associate Professor
Oliviera, Marcos	UIW, Feik School of Pharmacy, Associate Professor
Rodriguez, Raul B.	UIW, HEB School of Business & Administration, Associate Professor





The Catholic University has a vocation to address human suffering by teaching us to build & become just, peaceful & sustainable societies through our **instruction, practices, service & structures.**

Scripture and Catholic Social Teaching offer visions of just, peaceful & sustainable communities and provide tools to analyze and address human suffering, injustice and violence on the interpersonal, institutional & global levels.

Our calling at UIW is to teach justice, peace and sustainability in our classrooms & departments, and through service to the larger community/world.

—Sr. Walter Maher, CCVI

Vice President for Mission and Ministry



The University of the Incarnate Word  
Etling Center for Civic Leadership  
4301 Broadway  
Administration Building Rm #158  
San Antonio, Texas 78209-6397  
(210) 283-6423 phone/ (210) 805-3693 fax  
<http://www.uiw.edu/eccl>

